

# Smarter Spa Living

2026 product showcase





**Gecko is more than a  
spa component supplier.  
We're your partner in shaping  
the future of spa moments:  
intuitive, connected, effortless.**

**Smarter  
Spa Living**

# Gecko app



## Connect to what matters most: spa time

Unlock a smarter, simpler spa experience. Control your spa, monitor water quality, and reduce energy costs all from your phone



### Connect to control from anywhere

With remote access to your spa, you can check, adjust, and start it anytime, whether you're at work, on the road, or simply relaxing inside. No more last-minute setup. No more wondering if everything's ready.

Just peace of mind, the way spa time should feel.



### Connect to simpler water care

Open the cover to clean, clear water, every time. No guesswork, no calculations. Just simple, tailored dosing that takes you from water chemistry to just clean water.

Spa-ready whenever you are, the way spa time should feel.



### Connect to more energy savings

Ready when it's spa time. Savings when it's not. Even the most efficient spas save more with smarter downtime, adjusted to your routine.

Warm when you want it. No more, no less. The way spa time should feel.



# Gecko waterlab



## Sanitation made simple

A continuous water monitoring and recommendation solution integrated under the spa



### Peace of mind

Access exact water measurements from anywhere, no color interpretation needed. Continuous monitoring with alerts and reports helps you minimize the risk of losing water.



### Simple to use

No chemistry degree needed! Get clear, easy-to-follow instructions to keep your water crystal clear, all in the same app you use to control your spa.

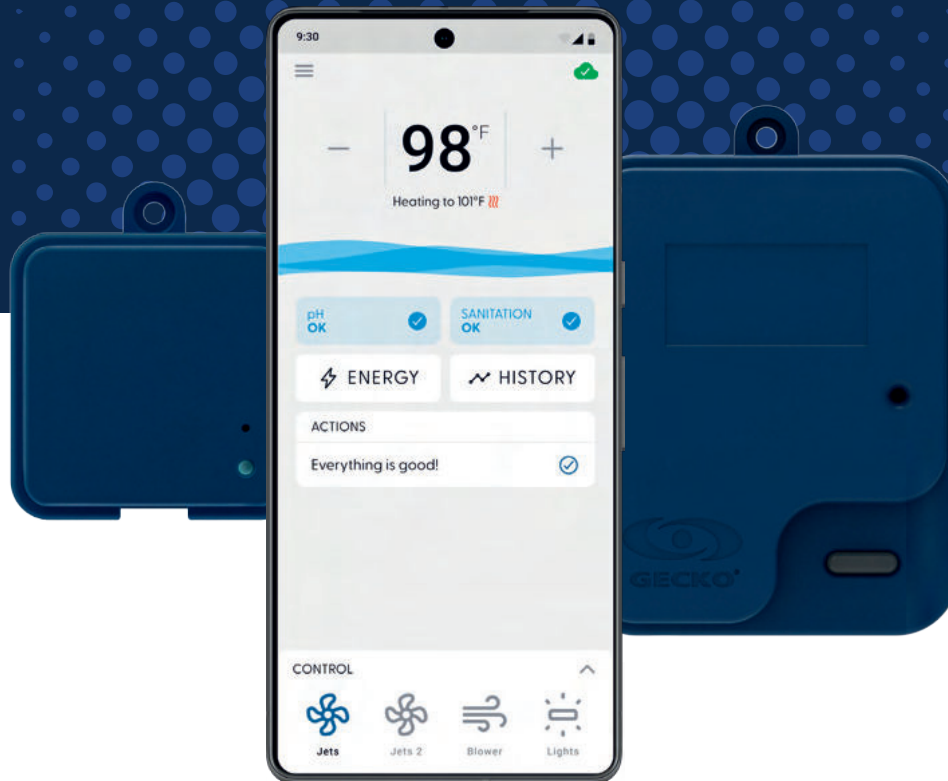


### Set & forget solution

Don't trade one maintenance burden for another. The all-in-one probe lasts 4 years and needs just one calibration for its entire lifespan.



# in.touch 3 & 3+



## Connectivity device

The easiest way to connect your spa with your smartphone using the Gecko mysPa app



### Mobile remote control

Turn your smartphone into a spa controller to adjust the temperature without walking to the spa.



### Continuous improvement

Stay ahead with regular system updates designed for new products keeping your spa feeling refreshed with every release.



### Reliable connectivity

Proven radio frequency (RF) communication between the modules ensures a strong, stable, long-range signal between your spa and router.

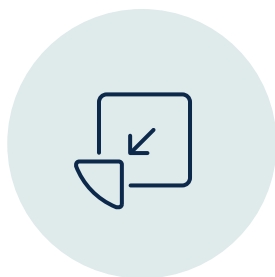


# VMS-1 maelstrom pump



## The quietest variable speed pump in the spa industry

The VMS-1 is a smart, variable speed pump that offers an enhanced hydrotherapy experience with a strong but quiet 3hp output



### Silent

Powerful hydrotherapy with whisper-quiet performance, letting users fully enjoy the soothing sound of water, natural conversation, and a truly peaceful spa experience.



### Energy-efficient

Thanks to its revolutionary electric motor, the VMS-1 moves water more efficiently. At the same high-speed level, it delivers up to 10% greater efficiency compared to the competition.



### Massage experience

Elevate your offer with a wide selection of massages powered by the variable-speed capacity of the VMS-1. All this with an ultra-quiet pump spa users will truly appreciate.



# Gecko maelstrom pumps



## Maelstrom MS-1 series The spa pump standard has been raised

Say hello to Gecko's custom-made motor

### Gecko motor

We've put all our engineering expertise to work to offer the best efficiency on the market. Drawing on Gecko's rich history, this pump combines outstanding performance in a compact design.



CMS-1 - single speed



MS-1 3hp - single speed

### Moves water efficiently

Dynamics between pump components are complex. To ensure optimal output, Maelstrom pumps are engineered to run at their sweet spot.



MS-1 high-efficiency  
2hp / 2.5hp / 3hp - 2 speeds



MS-1 3hp CE - single speed

### Uncompromising quality

Built to last with premium materials, Maelstrom pumps offer the best value on the market. Backed by Gecko's renowned North American quality and customer service, they're the most reliable supply solution for your spa pumps.



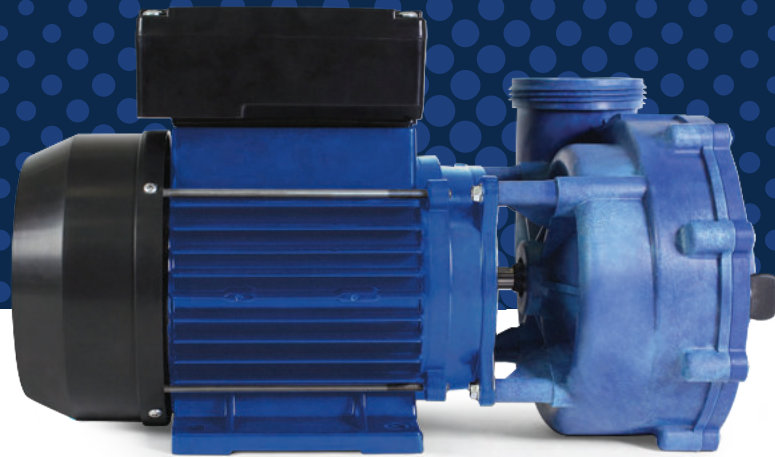
MS-1 3hp - 2 speeds



MS-1 2.5hp CE - 2 speeds



# Gecko Aqua-Flo pumps



## North American & International pump models Aqua-Flo by Gecko's pumps for small to swim spas

Power, performance, durability, reliability, efficiency



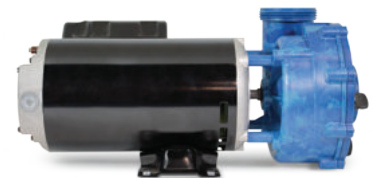
**XP3 / XP3 ce**

Designed for today's larger spas with multiple jets requiring increased flow and optimal performance. The perfect pump model for swim spas.



**XP2e / XP2e ce**

The Flo-Master XP2e pump provides greater flow rates with overall energy efficiency, increasing the features and benefits it offers to spa owners.



**XP2**

The Flo-Master XP2 outperforms any other 48 frame pumps. With a flow rate up to 225 GPM, it is perfect for all types of spas and hot tubs.



**XP2e BL ce**

Blue to the core, bold, lean and great for the bottom line, new eco-friendly Flo-Master's XP2e BL ce pumps can be easily customized to fit any needs.



**XP2 BL ce**

Eco-friendly Flo-Master's XP2 BL ce pumps can be easily calibrated to optimize the performance and enhance the efficiency of all spas.



**CMXP**

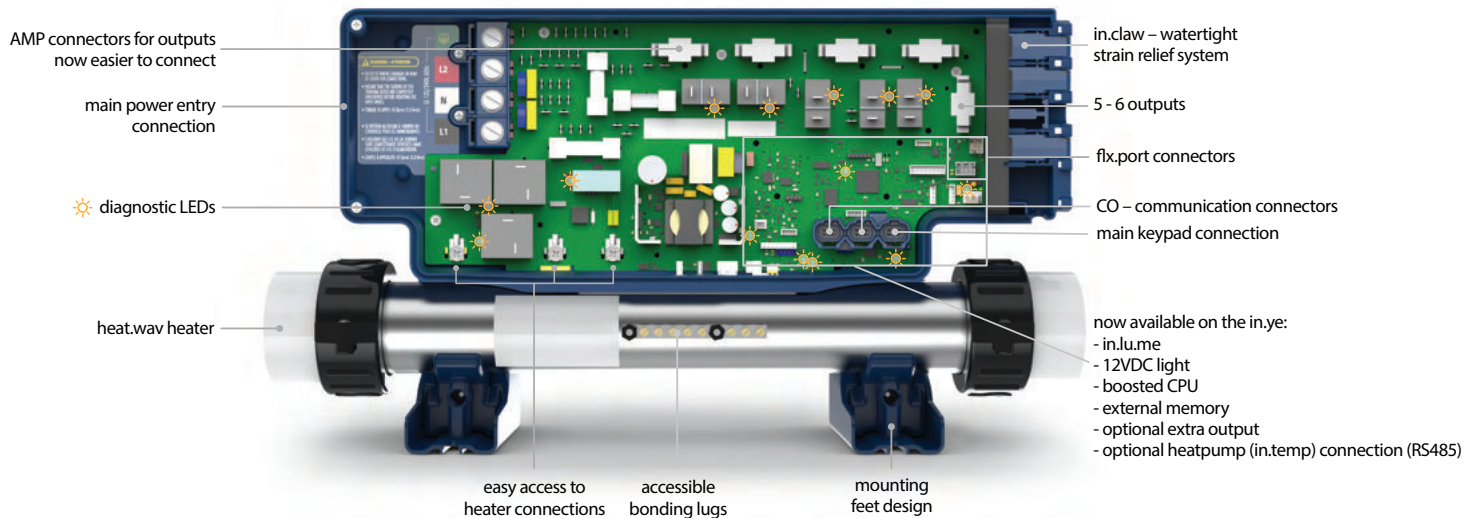
The Circ-Master CMXP pump features increased filtration efficiency, greater flow to heater and compact design for continuous duty operation.





## Y series control systems

Optimize your customers' spa experience  
with Gecko's new generation of Y series control systems



### Universal fit

Y series is designed to fit in perfectly and to be easily installed, powered and connected to pumps and accessories of spas of all sizes and configurations.



### Immediate boost

Y series delivers optimal performance and total control, giving spa owners the immediate satisfaction of getting a lot more than they expected.



### Future expandability

Y series allows the addition of wireless control from mobile devices, water sanitization, audio streaming and more, to maximize the spa experience.





## in.k1000 + and in.k1001+

### Giving full control

The in.k1000+ series is a full-featured touchscreen keypad with an intuitive user interface, powerful processor, bright colors, excellent water resistance and Wi-Fi connectivity



**flx.go**

Powered by Turn-N-Press technology for effortless control, clear navigation, and reliable performance in any condition.



**in.k800**

10 keys, large color display, menu-driven interface for Gecko's X and Y series of control systems for spas.



**in.k500**

7 keys, color display, menu-driven interface for Gecko's X and Y series of control systems for spas.



**in.k450**

7 raised keys, large LCD display, streamlined interface for Gecko's X and Y series of control systems for spas.



**in.k330**

5 keys, LCD color display, streamlined interface for Gecko's Y series of control systems for spas.



**in.k300**

4 keys, LCD display, streamlined interface for Gecko's X and Y series of control systems for spas.





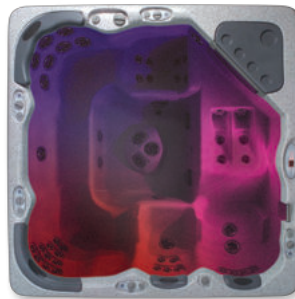
## in.lu.me & in.mix 300

Match your spa lighting to your mood  
in a single touch



### A lighting console at your fingertips

When connected to one of our Y series control systems, in.mix 300 transforms your keypad into a real lighting console.



### Lights up to 3 different color zones

in.mix 300 can control up to 3 independently managed or synchronized light zones in or around your spa.



### The power to create the perfect ambiance

Create a personalized ambiance easily with an infinite selection of colors and a light-intensity dimmer.



### For quick, easy and clean installation

in.lu.me eases the process of installing cables, lights and other equipment to seriously light up your spa.



### Sleek cable and connector designs

Cleverly designed loop, spyder and cluster cables and connectors with high-intensity RGB LED lights.



### Connects directly to the in.y and in.ye control systems

No need for an external LED controller. Full control of the color of your lights directly from the keypad.



in.mix 300 comes with a built-in power supply and can be connected to a 120V or 240V output of a Y series control system. It can drive up to a hundred points of RGB (red, green, blue) in three zones. More at [www.geckoalliance.com](http://www.geckoalliance.com)



\* not available in Canada

## in.stream 2

Outdoor audio station for spas and the whole backyard

## in.clear \*

Clear, clean, soft water every time you use your spa



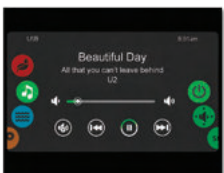
### Automatic generation of bromine

No need to add chemicals to your spa every week. in.clear is a very low maintenance system. Water stays clean even if left alone for weeks at a time.



### Free of harsh chemicals

The low salt requirement of in.clear and the absence of harsh chemicals provide the sanitization needed to give a perfect feel to the water of your spa.



in.k1000 touch screen keypad audio interface

### Awesome sound quality

in.stream 2 features Class D amplifier technology to enhance your outdoor audio experience.



in.k800 keypad audio interface

### All-in-one audio system and power supply

Compact, rugged and splash-proof, in.stream 2 has a built-in power supply designed to get the most out of its amplifier.



### Easy adjuster (maintenance mode)

Once you find the proper adjustment for your spa, the level is set. This maintenance level monitors and controls residual bromine in your spa.

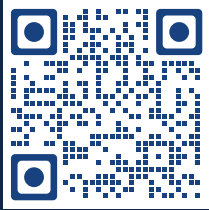


### Self-diagnostic

Keypad messages and indicators let you know when to add BromiCharge salt for optimal bromine generation.



Gecko marketing kit



# Smarter Spa Living





800.78.GECKO, [marketing@geckoal.com](mailto:marketing@geckoal.com)  
[www.geckoalliance.com](http://www.geckoalliance.com)

© 2026 - Gecko Alliance